



QLogic® StorFusion™ Fabric Assigned Port Worldwide Name (FA-WWN) with QLogic Fibre Channel Adapters

Applicable Products

QLogic Model	Description
2600 Series	Gen5 and Enhanced Gen5 16Gb Fibre Channel Adapters

1 Introduction

This application note provides instructions to system administrators for using the Fabric Assigned WWN (FA-WWN) feature on QLogic® StorFusion™-enabled Fibre Channel Host Bus Adapters for servers and storage. Using either Brocade® Network Advisor (BNA) or Brocade Fabric OS® (FOS) CLI, an administrator can configure and pre-assign the storage and switch hardware, and even zone the SAN fabric—all at the port level—without having the servers or adapters on hand.

After the fabric has been assigned, and the adapters and storage are available, an administrator can configure the adapters to assume the manually pre-assigned WWNs using the FA-WWN tool, either the QLogic server boot *Fast!UTIL* command utility or QLogic QConvergeConsole® (QCC) management application.

FA-WWN makes it much easier to deploy and replace fabric-attached servers, and to minimize the impact on SAN administrators. FA-WWN allows you to pre-assign the WWN of a physical adapter using *Fast!UTIL* during boot or within QConvergeConsole GUI.

2 Prerequisites

Before you begin, ensure that the following components are installed:

- QConvergeConsole version 1.0.222 or later
- Brocade Gen5 16Gb Fibre Channel switch with BNA and FOS 7.3 or later
- QLogic 2600 Series Fibre Channel Host Bus Adapters with firmware version 8.2.1 or later

3

Disabling Ports and Pre-assigning the WWN Fabric in Brocade Network Advisor

Administrators have the option to automatically or manually pre-assign WWNs to adapters without the servers present or Fibre Channel Host Bus Adapters installed. To assign and configure the WWN, you must first disable the ports you want to pre-assign.

To disable a port:

1. Launch Brocade Network Advisor.
2. In the left pane, expand a network and switch node, and then right-click the port that you want to configure.
3. On the shortcut menu, point to **Enable/Disable**, and then click **Disable**.
4. To disable other ports that require configuration, repeat the previous steps.

To configure a port:

1. Launch Brocade Network Advisor.
2. In the left pane, expand a network node, and then right-click the switch that you want to configure.
3. On the shortcut menu, click **Fabric Assigned WWN**.
The Configure Fabric Assigned WWNs dialog box opens. You can choose to either automatically or manually assign a port, as detailed in the following procedures.

To automatically assign FA-WWN to a port:

1. In the BNA Configure Fabric Assigned WWNs dialog box, click **Auto**.
2. To enable the selected port, click **OK**.
3. To configure other ports, repeat the preceding steps.

To manually assign FA-WWN to a port:

1. In the BNA Configure Fabric Assigned WWNs dialog box, click **User**.
2. Select the port number that you want to modify, and then under **Fabric Assigned WWN**, type the WWN.
3. Click **OK**.
4. To configure other ports, repeat the preceding steps.

4 Configuring the Adapter for FA-WWN

After the new servers and adapters are available for FA-WWN configuration, an administrator can configure the ports in one of two ways:

- Using the QLogic *Fast!UTIL* command utility (see [Section 4.1](#)) that is built into the Host Bus Adapter firmware and BIOS. *Fast!UTIL* is available during a server boot.
- Using the QConvergeConsole GUI management utility (see [Section 4.2](#)).

4.1 Using *Fast!UTIL* to Configure an Adapter

To configure an adapter for FA-WWN using *Fast!UTIL*:

1. During system power-on initialization, press the CTRL+Q or ALT+Q keys. [Figure 4-1](#) shows an example

```
QLE2672 PCI3.0 Fibre Channel ROM BIOS Version 3.19
Copyright (C) QLogic Corporation 1993-2012. All rights reserved.
www.qlogic.com

Press <CTRL-Q> or <ALT-Q> for Fast!UTIL
```

Figure 4-1. *Fast!UTIL*: Boot Screen

2. Select the adapter port to which you want to assign the FA-WWN that was configured in BNA (see [Figure 4-2](#)), and then press the ENTER key.

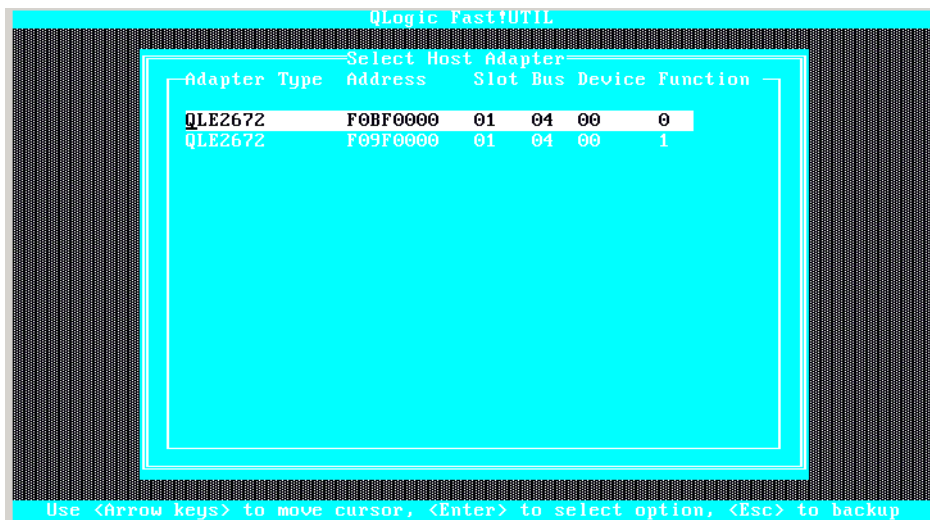


Figure 4-2. *Fast!UTIL*: Select Adapter Port

3. On the *Fast!UTIL* **Options** menu, select **Configuration Settings**.
4. On the **Configuration Settings** menu, select **Advanced Adapter Settings**.

5. On the **Advanced Adapter Settings** menu (see [Figure 4-3](#)):
 - a. Press the arrow keys to select **Fabric Assigned WWPN**.
 - b. Toggle the setting to **Enabled**.
 - c. Press ENTER.



Figure 4-3. Fast!UTIL: Fabric Assigned WWPN

6. Select **Save Changes**.
7. Select **Reboot System**.

4.2

Using QConvergeConsole GUI to Configure an Adapter

To configure an adapter for FA-WWN using QConvergeConsole:

1. Launch QConvergeConsole GUI.
2. In the system tree pane on the left, click the **Host** tab.
3. On the Host page, expand the network nodes, and then select the port that you want to configure.
4. In the content pane on the right, click the **Parameters** tab.
5. On the Parameters page, click the **Advanced HBA Parameters** tab.

6. On the Advanced HBA Parameters page, select the **Enable Fabric Assigned WWN** check box, as shown in [Figure 4-4](#).

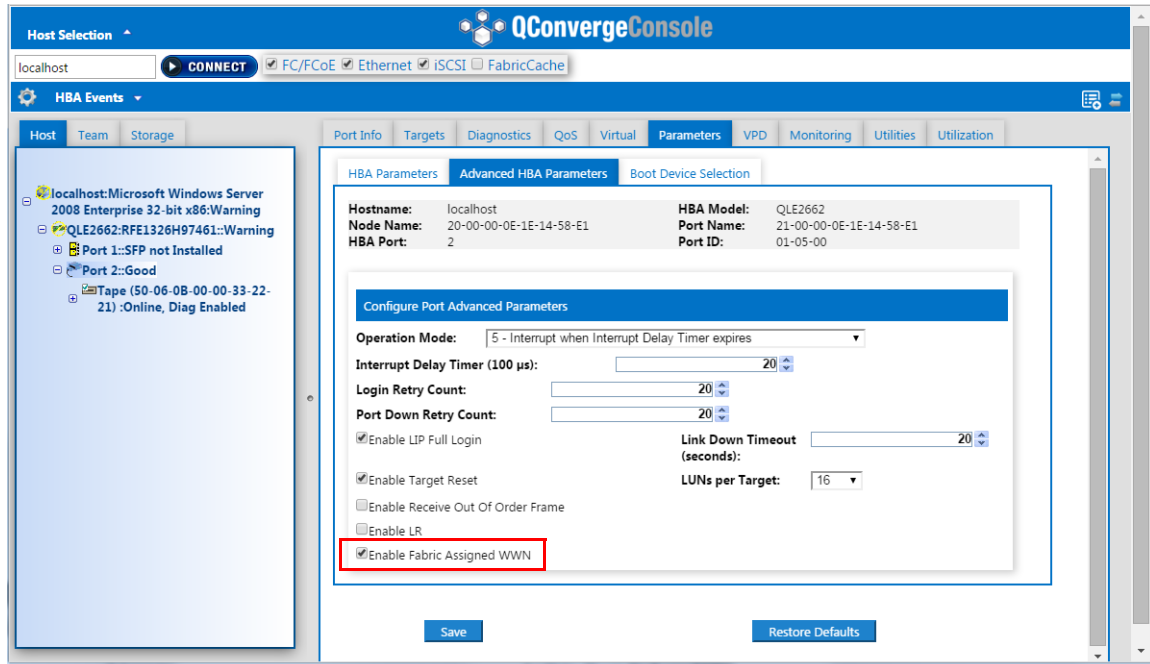


Figure 4-4. QConvergeConsole: Enabling FA-WWN

7. Click **Save**.
8. Refresh the browser.
9. Click the **Port Info** tab.

On the Port Info page, the **Port Name** should now match the port name from BNA, as pre-assigned in [Disabling Ports and Pre-assigning the WWN Fabric in Brocade Network Advisor](#).

The FA-WWN configuration is complete.



Document Revision History	
Revision A, February 9, 2016	
Changes	
Initial release of new application note.	



Corporate Headquarters QLogic Corporation 26650 Aliso Viejo Parkway Aliso Viejo, CA 92656 949.389.6000 www.qlogic.com

International Offices UK | Ireland | Germany | France | India | Japan | China | Hong Kong | Singapore | Taiwan | Israel

© 2016 QLogic Corporation. All rights reserved worldwide. QLogic, the QLogic logo, QConvergeConsole, and StorFusion are trademarks or registered trademarks of QLogic Corporation. Brocade and Fabric OS are registered trademarks of Brocade Communications Systems, Inc. All other brand and product names are trademarks or registered trademarks of their respective owners.

This document is provided for informational purposes only and may contain errors. QLogic reserves the right, without notice, to make changes to this document or in product design or specifications. QLogic disclaims any warranty of any kind, expressed or implied, and does not guarantee that any results or performance described in the document will be achieved by you. All statements regarding QLogic's future direction and intent are subject to change or withdrawal without notice and represent

